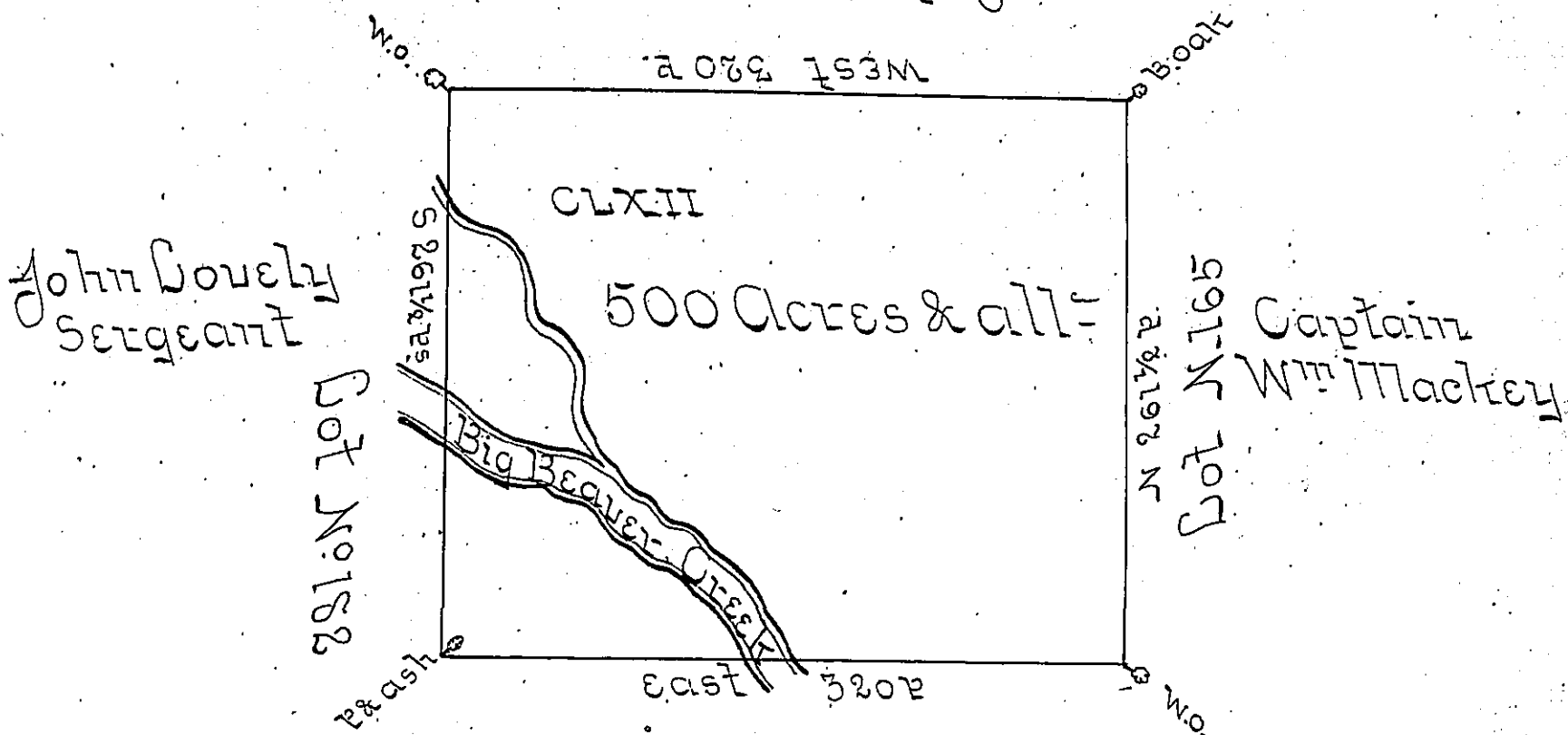


John Hites and Wm Mc Donald
- 21-2191-N 707



Lot No 163 -
Captain Samuel Craig

In pursuance of an Act of the General Assembly of the State of Pennsylvania, passed the 24th day of February 1785, entitled "An Act for directing the mode of distributing the Donation Lands, promised the troops by this Commonwealth;" and by order of the Surveyor General, with the approbation of the honorable the Executive Council, I have surveyed, on the 13th day of June, 1786, the above described Tract of Five hundred Acres of Land and allowance for roads, &c. No 162, situate in District No 2, on the west side of the Alleghany river, in the county of Westmoreland.

L. Evans
D. Survey

To John Lukens, Esquire,
Surveyor General - }

IN TESTIMONY that the above is a copy of the original remaining on file in the Department of Internal Affairs of Pennsylvania, made conformably to an Act of Assembly approved the 16th day of February, 1833, I have hereunto set my Hand and caused the Seal of said Department to be affixed at Harrisburg, this fourth day of August 1903.

Isaac P. Brown
Secretary of Internal Affairs.